

neway[®]

Rack mount monitor for broadcast & live streaming.
Application for video wall & broadcast trucks.

1920×1080

HDMI / SDI

Remote Control

17.3"

1RU RACK MOUNT MONITOR



RM1731S HDMI2.0 + SDI
RM1731 HDMI2.0 2.0

RM1730S
HDMI - SDI Cross Conversion

1920×1080

RM1731S / RM1731

SUPPORT HDR

Allowing lighter and darker details to be displayed more clearly.
Support ST2084 300 / ST2084 1000 / ST2084 10000 / HLG.

SUPPORT 3D-LUT

Built-in 3D-LUT, featuring 17 default logs and 6 user logs.

RM1730S

CROSS CONVERSION

Signal transmits from SDI input to HDMI output and from
HDMI input to SDI output.



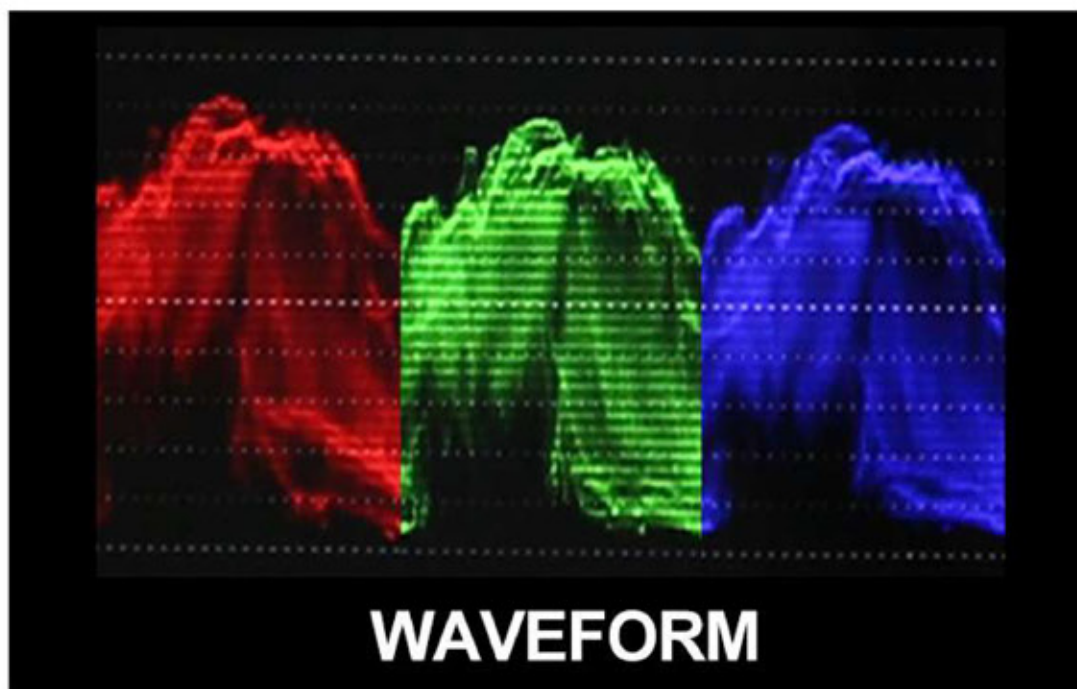


LAN CONNECTION

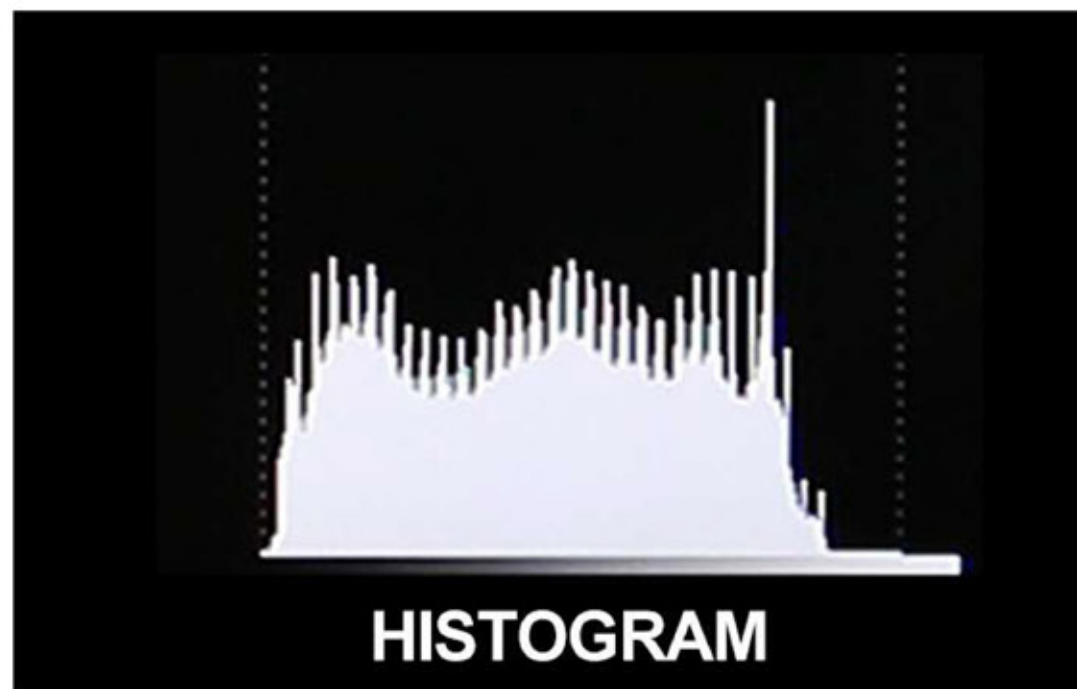
Select LAN port to connect to the PC, allowing the application to identify the monitor before control.

REMOTE CONTROL

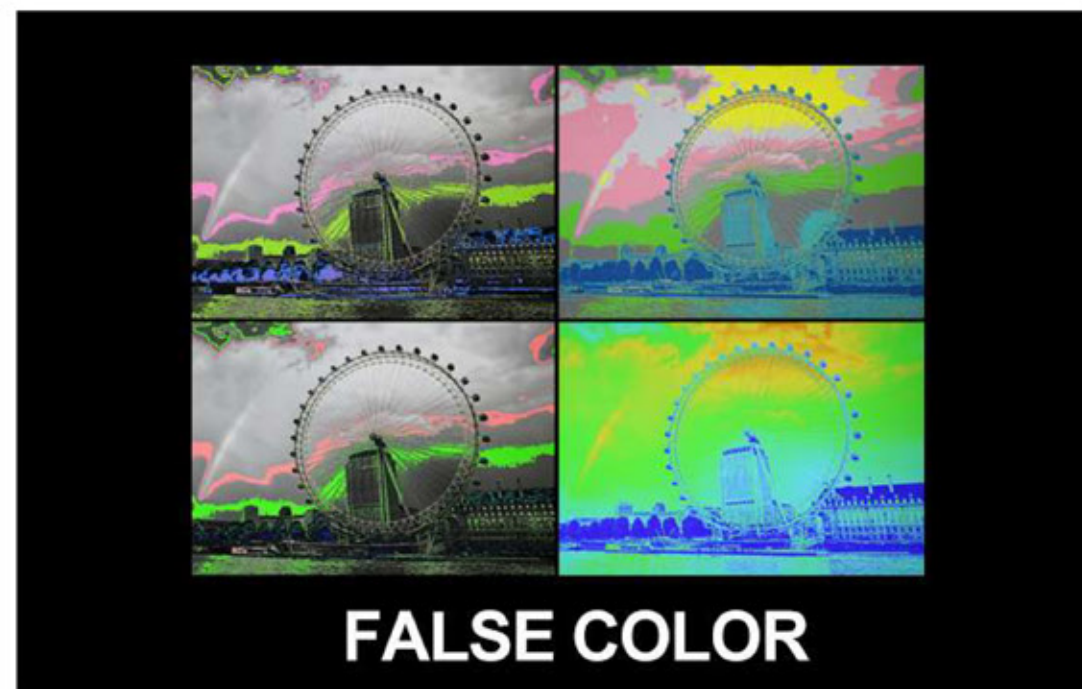
Connect your computer to control the monitor via applications. Such as signal sources, functions, and audio...



WAVEFORM



HISTOGRAM



FALSE COLOR

- 
Cross Conversion
(RM1730S)
- 
3D-LUT
(RM1731S)
- 
HDR
(RM1731S)
- 
Time Code
(SDI Only)
- 
Remote
- 
Vector scope
- 
Waveform
- 
Level meter
- 
Histogram
- 
Exposure
- 
Peaking
- 
False color
- 
Check field
- 
Color bar
- 
Pixel zoom
- 
Pix to pix
- 
Image Flip

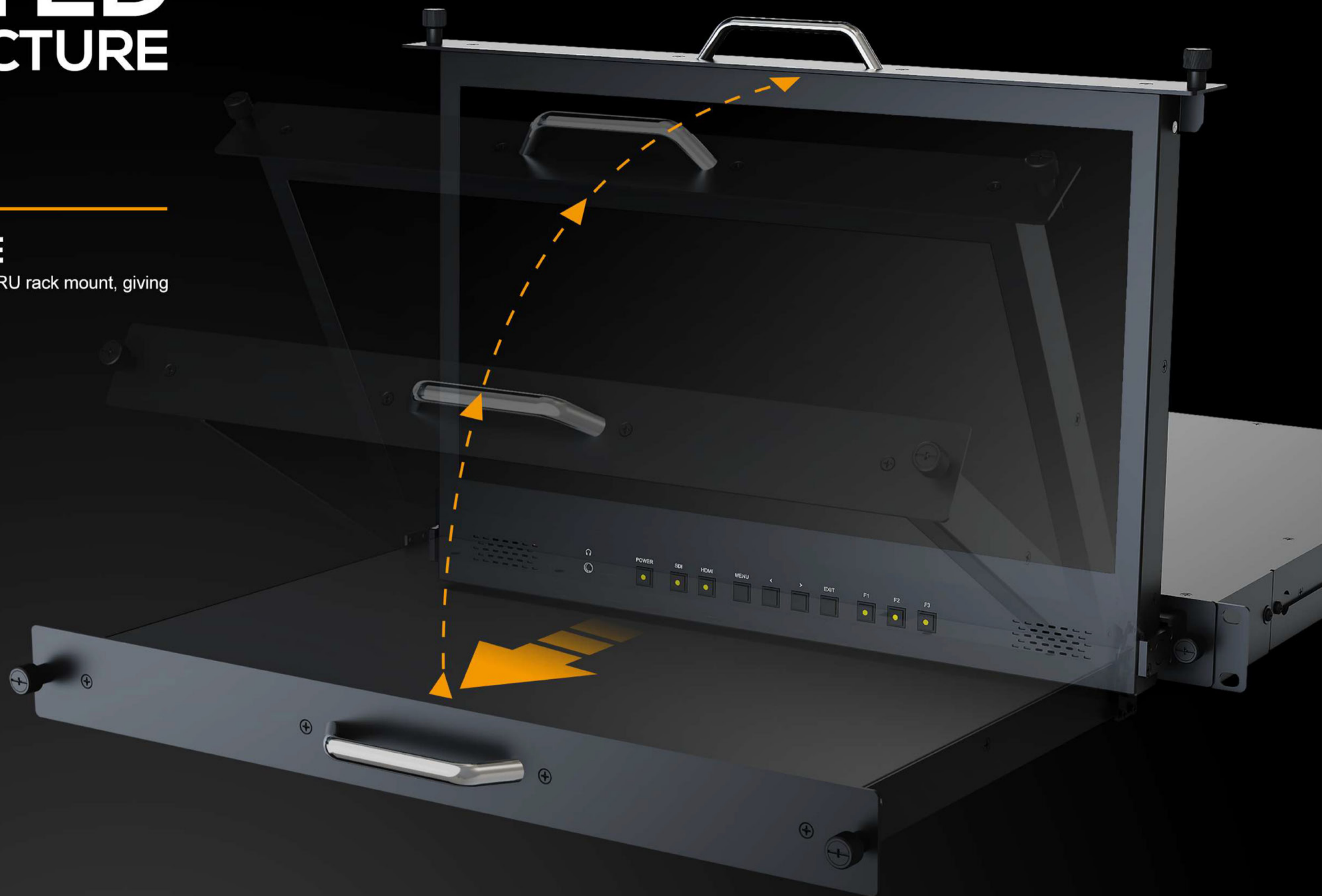
PATENTED DESIGN STRUCTURE

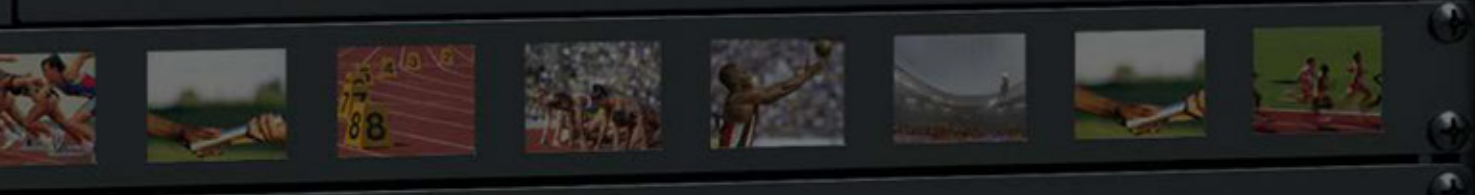
PATENT NO.

201610862204.5 201621090715.1

SLIM & SAVING SPACE

Clever design of folding and storage, using only 1RU rack mount, giving consideration to beauty and compactness.





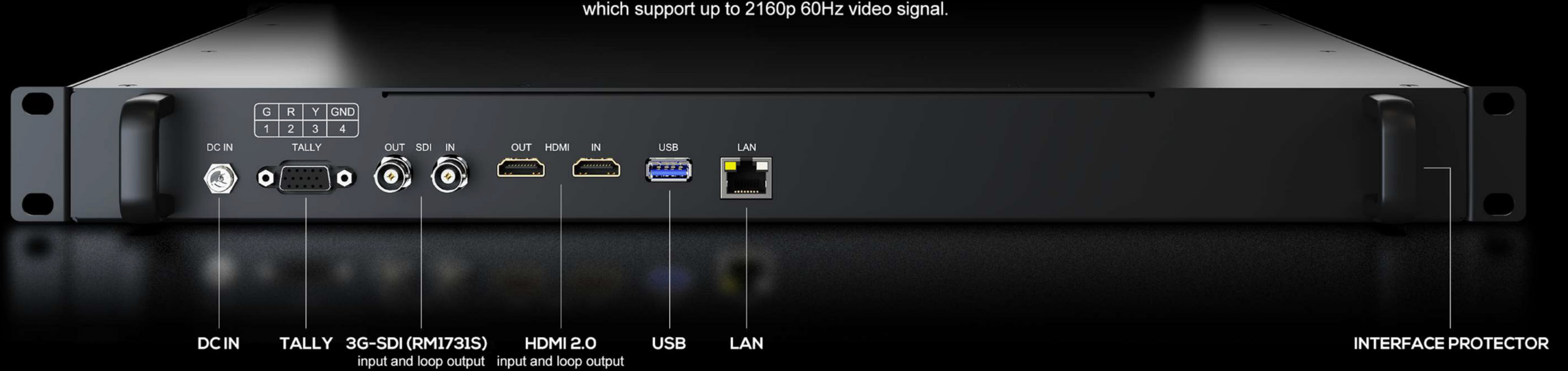
TRU

RACK MOUNT INTELLIGENT SDI MONITORING

It has a various of mounting methods for broadcast, on-site monitoring and live broadcast truck, etc. 1RU rack mount design for a customized monitoring solution, which not only save the space of rack greatly with 17.3 inch monitor, but also view from different angles when monitoring.

RM1731S/ RM1731

Equipped with HDMI 2.0 input and loop output interfaces,
which support up to 2160p 60Hz video signal.



RM1730S

Equipped with HDMI, 3G-SDI, DVI and audio interfaces,
which support up to 1080p 60Hz video signal.



SPECIFICATIONS

		RM1731S / RM1731	RM1730S
DISPLAY	Panel	17.3" IPS	17.3" IPS
	Physical Resolution	1920×1080	1920×1080
	Aspect Ratio	16:9	16:9
	Brightness	300 nits	300 nits
	Contrast	800:1	700:1
	Viewing Angle	170° / 170°(H/V)	178° / 178° (H/V)
	HDR Supported	HLG; ST2084 300/1000/10000	-
INPUT	HDMI	1 (HDMI 2.0)	1
	3G-SDI	1 (RM1731S only)	1
	DVI	-	1
OUTPUT	HDMI	1 (HDMI 2.0)	1
	3G-SDI	1 (RM1731S only)	1
SUPPORTED FORMATS	HDMI	Support up to 2160p60	Support up to 1080p60
	3G-SDI	Support up to 1080p60	Support up to 1080p60
AUDIO IN/OUT	Speaker	2	2
	HDMI	8ch 24-bit	8ch 24-bit
	Ear Jack	3.5mm - 2ch 48kHz 24-bit	3.5mm - 2ch 48kHz 24-bit
POWER	Input Voltage	DC 10-24V	DC 10-18V
	Power Consumption	≤14W (12V)	≤32W (15V)
ENVIRONMENT	Operating Temperature	0°C~50°C	0°C~50°C
	Storage Temperature	-20°C~60°C	-20°C~60°C
DIMENSION	Dimension(LWD)	482.5mm × 44mm × 507.5mm	482.5mm × 44mm × 507.5mm
	Weight	8.9kg	8.6kg



RM1731



RM1731S



RM1730S



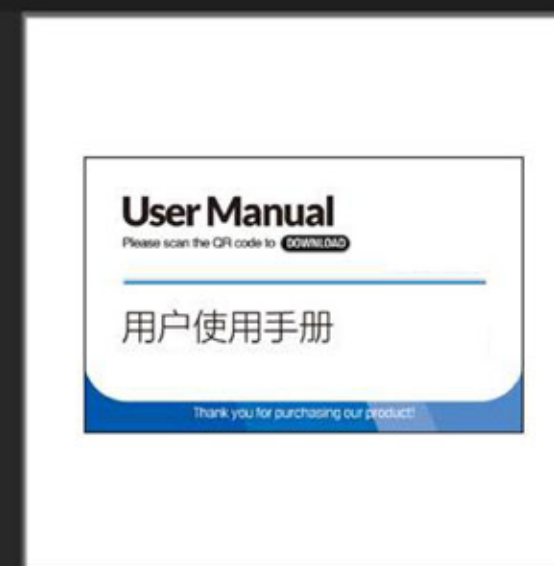
STANDARD



12V 2A DC Power Adapter



Tally Connector



E-User Manual